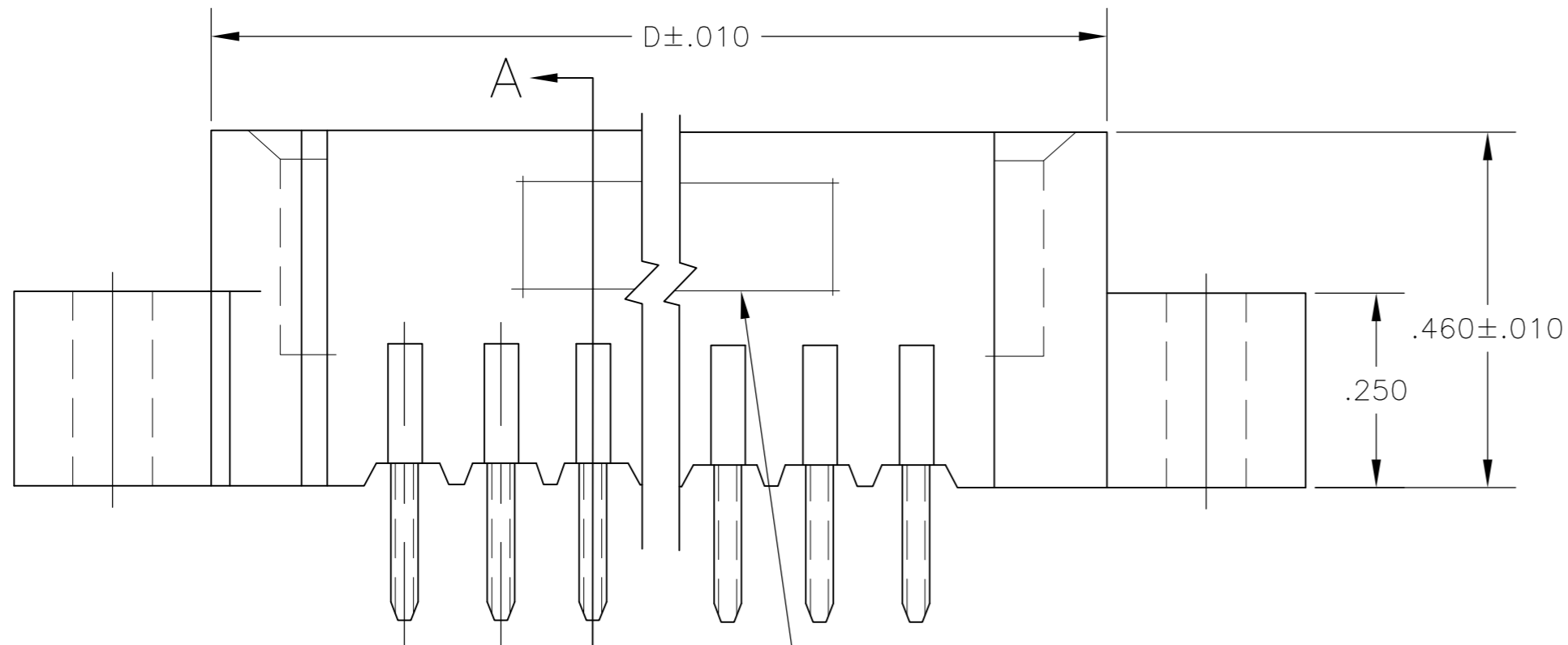
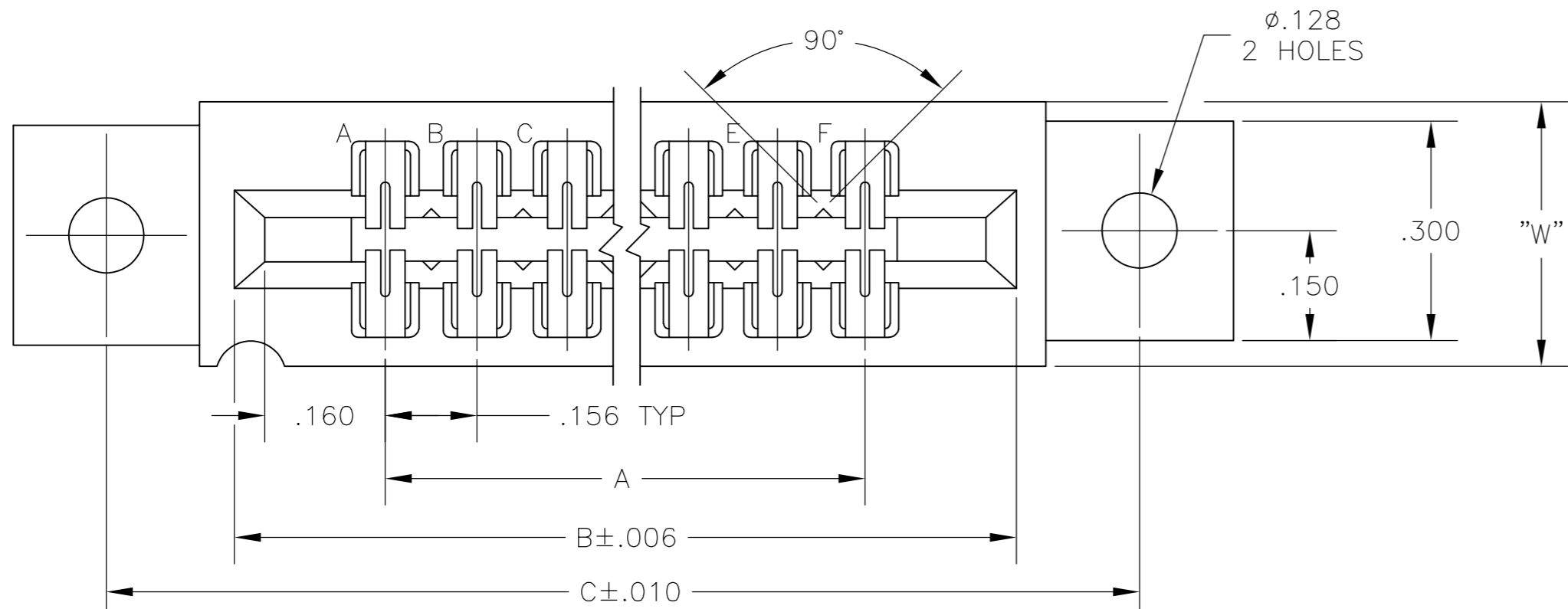
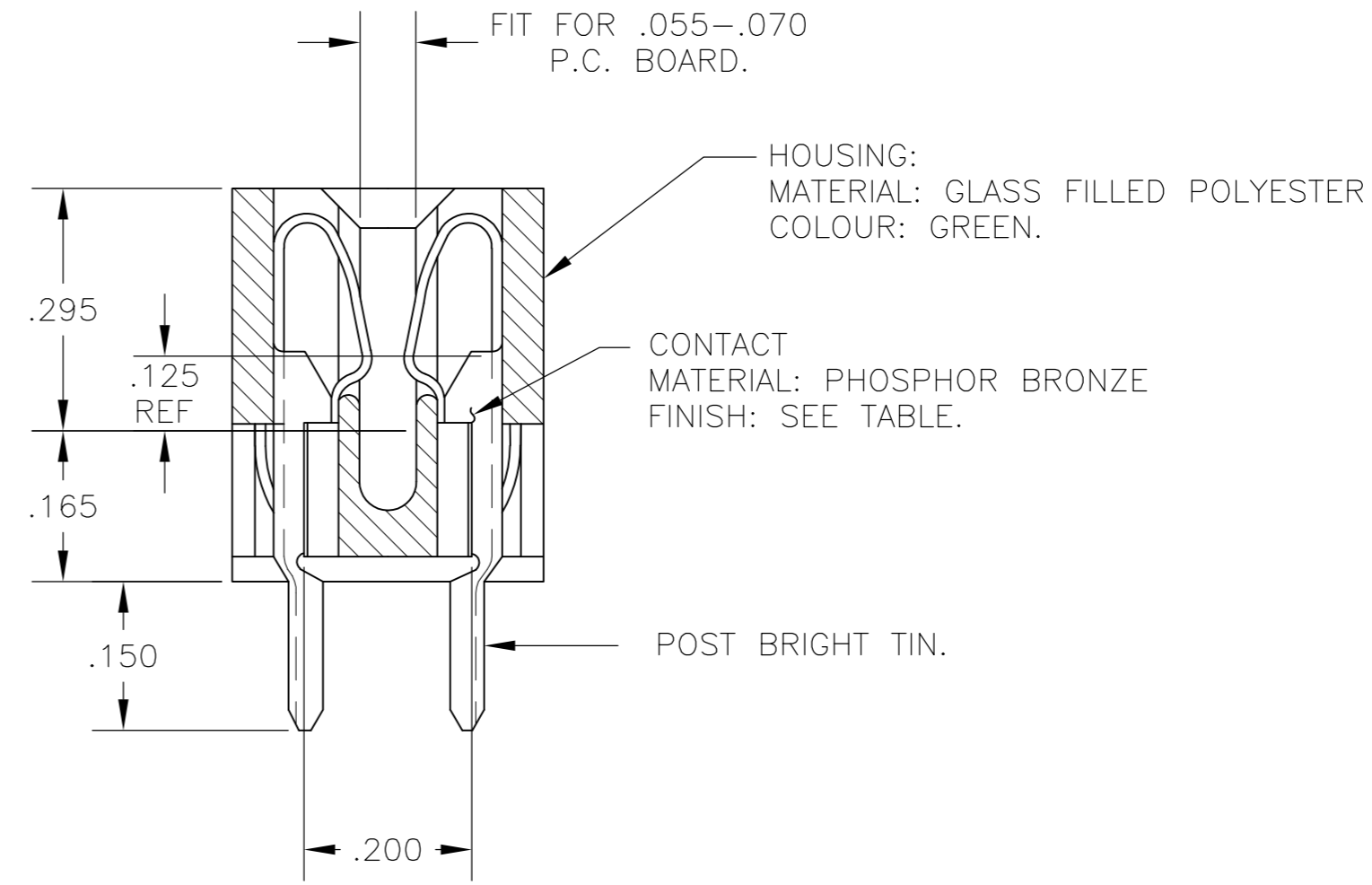


THIS DRAWING IS UNPUBLISHED. RELEASED FOR PUBLICATION
 © COPYRIGHT BY TYCO ELECTRONICS CORPORATION. ALL RIGHTS RESERVED.

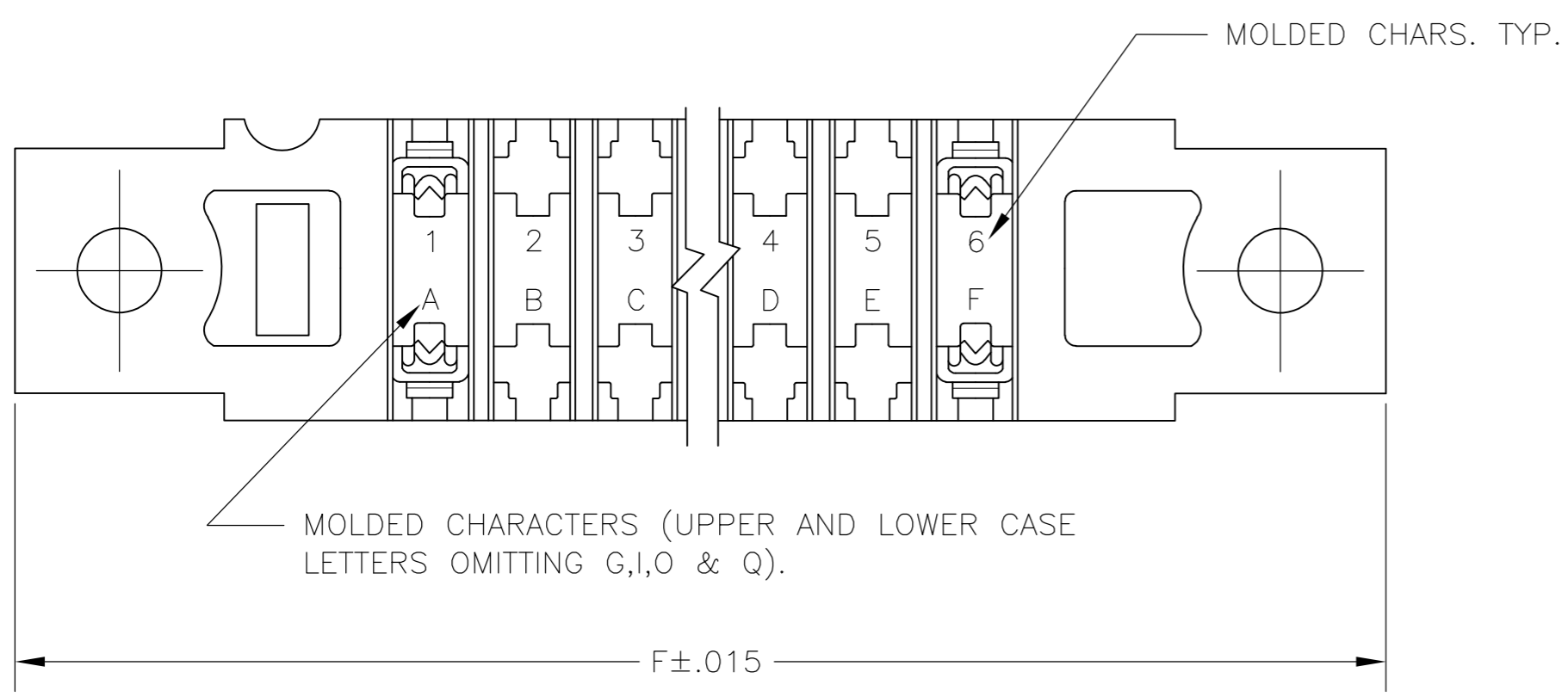
LOC		DIST		REVISIONS			
P	LTR	DESCRIPTION	DATE	DWN	APVD		
AD	00	M	ECO-07-012860	23JUL2007	RB	MM	



"AMP" PART NO & DATE CODE
 INK STAMPED WHITE OR
 HOT STAMP (NO WHITE TAPE)
 IN THIS AREA (SIDE OPTIONAL)



SECTION A-A



THIS DRAWING IS A CONTROLLED DOCUMENT.		DWN	19MAR75	Tyco Electronics Corporation Harrisburg, Pa 17105-3608
DIMENSIONS: INCHES		CHK	20MAR75	
		APVD	20MAR75	
TOLERANCES UNLESS OTHERWISE SPECIFIED:		PRODUCT SPEC		NAME
0 PLC	± -	APPLICATION SPEC		HOUSING ASSY, LOW PROFILE, EDGE CONNECTOR, FLOW SOLDER, FOR .052 DIA. HOLE, .156X.200 CENTERS.
1 PLC	± -	WEIGHT		SIZE
2 PLC	± -	MATERIAL		CAGE CODE
3 PLC	± .005	FINISH		DRAWING NO
4 PLC	± -	SEE CALL-OUT		RESTRICTED TO
ANGLES	± -	CUSTOMER DRAWING		A2 00779 C=530655
SCALE 4:1		SHEET 1 OF 2		REV M

530655

THIS DRAWING IS UNPUBLISHED. RELEASED FOR PUBLICATION
 © COPYRIGHT BY TYCO ELECTRONICS CORPORATION. ALL RIGHTS RESERVED.

LOC	DIST	REVISIONS					
AD	00	P	LTR	DESCRIPTION	DATE	DWN	APVD
		-		SEE SHEET 1	-	-	-

- 1 .000015 MIN GOLD OVER .000050 MIN. NICKEL IN CONTACT AREA.
- 2 .000030 MIN GOLD OVER .00005 MIN. NICKEL IN CONTACT AREA.
- 3 SELECTIVELY LOADED, OMIT CONTACTS IN CIRCUIT CAVITIES 14,16,18,S AND U
- 4 ALL PARTS ASSEMBLED IN MEXICO MUST BE STAMPED "ASSY IN MEXICO" THE WORD "MEXICO" CAN BE SUBSTITUTED ONLY WHERE PART SIZE PROHIBTS STAMPING "ASSY IN MEXICO", INK STAMP COLOUR WHITE OR HOT STAMP (NO WHITE TAPE) 115-9009, APPROX. WHERE SHOWN, SIDE OPTIONAL.
- 5 MATTE TIN PLATED CONTACT TAILS.

1 PART NO	NO.OF. POSITION	A	B	C	D	W	F	2 PART NO	
5	-	43	6.552	6.872	7.307	7.012	.437	7.557	8-530655-3
5	-	28	4.212	4.532	4.967	4.672	.370	5.217	8-530655-2
5	-	36	5.460	5.780	6.215	5.920	.437	6.465	8-530655-0
5	-	30	4.524	4.844	5.279	4.984	.437	5.529	7-530655-9
5	-	22	3.276	3.596	4.031	3.736	.370	4.281	7-530655-6
5	-	18	2.652	2.972	3.407	3.112	.370	3.657	7-530655-5
5	-	15	2.184	2.504	2.939	2.644	.370	3.189	7-530655-4
5	-	12	1.716	2.036	2.471	2.176	.370	2.721	7-530655-3
5	-	10	1.404	1.724	2.159	1.864	.370	2.409	7-530655-2
5	-	6	.780	1.100	1.535	1.240	.370	1.785	7-530655-1
5	-	18	2.652	2.972	3.407	3.112	.370	3.657	3-530655-4
	1-530655-3	43	6.552	6.872	7.307	7.012	.437	7.557	3-530655-3
	1-530655-2	28	4.212	4.532	4.967	4.672	.370	5.217	3-530655-2
	1-530655-1	44	6.708	7.028	7.463	7.168	.437	7.713	3-530655-1
	1-530655-0	36	5.460	5.780	6.215	5.920	.437	6.465	3-530655-0
	530655-9	30	4.524	4.844	5.279	4.984	.437	5.529	2-530655-9
	530655-8	25	3.744	4.064	4.499	4.204	.370	4.749	2-530655-8
	530655-7	24	3.588	3.908	4.343	4.048		4.593	2-530655-7
	530655-6	22	3.276	3.596	4.031	3.736		4.281	2-530655-6
	530655-5	18	2.652	2.972	3.407	3.112		3.657	2-530655-5
	530655-4	15	2.184	2.504	2.939	2.644		3.189	2-530655-4
	530655-3	12	1.716	2.036	2.471	2.176		2.721	2-530655-3
	530655-2	10	1.404	1.724	2.159	1.864		2.409	2-530655-2
	530655-1	6	.780	1.100	1.535	1.240		1.785	2-530655-1

OBSOLETE

THIS DRAWING IS A CONTROLLED DOCUMENT.		DWN	19MAR75	Tyco Electronics Corporation Harrisburg, Pa 17105-3608
DIMENSIONS: INCHES		CHK	20MAR75	
TOLERANCES UNLESS OTHERWISE SPECIFIED:		APVD	20MAR75	
0 PLC ± - 1 PLC ± - 2 PLC ± - 3 PLC ± - 4 PLC ± - ANGLES ± -		PRODUCT SPEC		
MATERIAL SEE CALL-OUT		FINISH	SEE CALL-OUT	NAME HOUSING ASSY, LOW PROFILE, EDGE CONNECTOR, FLOW SOLDER, FOR .052 DIA. HOLE .156X.200 CTRS.
		WEIGHT	-	SIZE CAGE CODE DRAWING NO A2 00779 C=530655
		CUSTOMER DRAWING		RESTRICTED TO
		SCALE	1:1	SHEET 2 OF 2 REV M